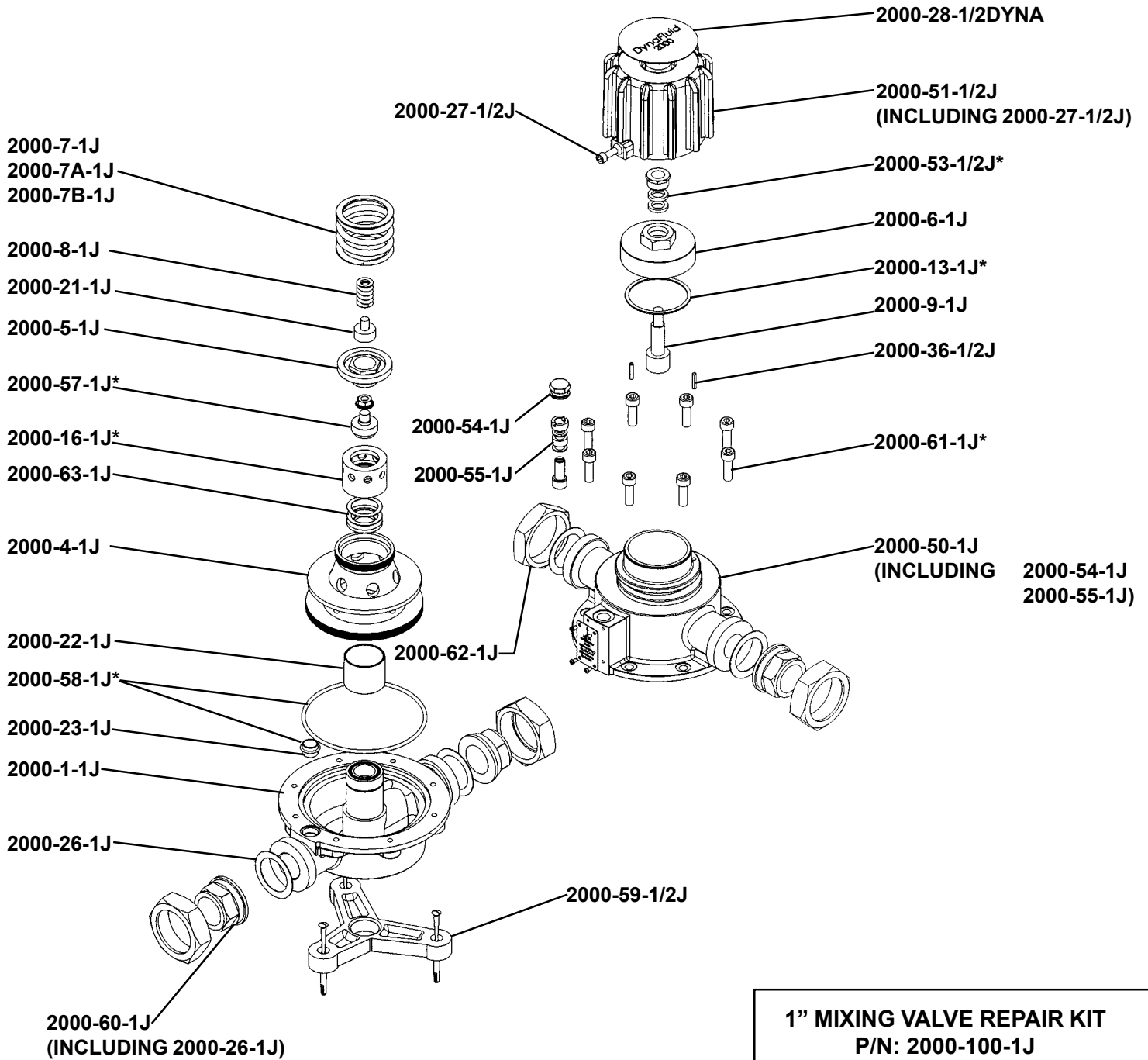


Dynafluid 2000 - 1"



1" MIXING VALVE REPAIR KIT
P/N: 2000-100-1J
INCLUDES: 2000-13-1J
 2000-53-1/2J
 2000-16-1J
 2000-57-1J
 2000-58-1J
 2000-61-1J
 2000-63-1J

1" DYNAFLUID VALVE

| T&S Part Number | Dynafluid Part Number | New Dynafluid Part Number | Description |
|-----------------|-----------------------|---------------------------|-----------------------------|
| 012797-45 | | 2000-28-1/2DYNA | NAMEPLATE |
| 005248-45 | SPSV0015J | | NAMEPLATE |
| 012790-45 | | 2000-51-1/2J | CONTROL KNOB |
| 004155-45 | SPSV0021J | | CONTROL KNOB |
| 012766-45 | | 2000-27-1/2J | CONTROL KNOB SCREW |
| 004094-45 | 769-27-1/2 | | CONTROL KNOB SCREW |
| 004123-45 | | 2000-53-1/2J | TOP CAP PACKING SET |
| 012793-45 | | 2000-6-1J | TOP CAP |
| 004158-45 | F8CP0026J | | TOP CAP |
| 012794-45 | | 2000-13-1J | TOP CAP GASKET |
| 004163-45 | 769-13-1 | | TOP CAP GASKET |
| 004162-45 | | 2000-9-1J | SPINDLE |
| 004145-45 | | 2000-36-1/2J (2) | CONTROL KNOB STOPS |
| 012813-45 | | 2000-61-1J | COVER SCREWS & WASHERS |
| 004142-45 | SPSV0006J | | COVER SCREWS & WASHERS |
| 012789-45 | | 2000-50-1J | COVER ASSEMBLY |
| 004152-45 | SPSV0048J | | COVER ASSEMBLY |
| 012800-45 | | 2000-62-1J | SEALING PLUG & WASHER |
| 004178-45 | SPSV0027J | | SEALING PLUG & WASHER |
| 004165-45 | | 2000-55-1J | INPUT VALVE & PACKING |
| 004164-45 | | 2000-54-1J | INPUT STOP & WASHER |
| 004159-45 | | 2000-7A-1J | FIXED SPRING 0-50 PSIG |
| 004160-45 | | 2000-7-1J | FIXED SPRING 50-100 PSIG |
| 004161-45 | | 2000-7B-1J | FIXED SPRING 100-150 PSIG |
| 004959-45 | | 2000-8-1J | VARIABLE SPRING |
| 004168-45 | | 2000-57-1J | STEAM VALVE COMPLETE |
| 012792-45 | | 2000-5-1J | UPPER PISTON PLATE & SCREWS |
| 004157-45 | SPSV0024J | | UPPER PISTON PLATE & SCREWS |
| 004166-45 | | 2000-16-1J | SEAT RETAINER |
| 004167-45 | | 2000-63-1J | SEAT WASHERS |
| 012791-45 | | 2000-4-1J | SKIRTED PISTON |
| 004156-45 | 770-4-1J | | SKIRTED PISTON |
| 004171-45 | | 2000-22-1J | SLEEVE |
| 012795-45 | | 2000-58-1J | COVER TO BASE SEAL |
| 006168-45 | X1WR0100J | | COVER TO BASE GASKET |
| 012835-45 | | 2000-23-1J | RELIEF/LOCATION TUBE |
| 004143-45 | 770-33-1 | | RELIEF/LOCATION TUBE |
| 012786-45 | | 2000-1-1J | BODY |
| 004150-45 | F8BY0104J | | BODY |
| 012796-45 | | 2000-26-1J | UNION GASKET |
| 004173-45 | MV22-1 | | UNION GASKET |
| 012798-45 | | 2000-60-1J | UNION ASSEMBLY |
| 004174-45 | PESL0019J | | UNION ASSEMBLY |
| 012764-45 | | 2000-59-1/2J | BRACKET AND SCREWS |
| 004090-45 | SPSV0064J | | BRACKET AND SCREWS |
| 012802-45 | | 2000-100-1J | VALVE REPAIR KIT |
| 004149-45 | SPSV0039J | | VALVE REPAIR KIT |